

## Installation Procedure for Firmware

To update the firmware, use a computer where PaperStream IP has been installed.

1. Download the firmware update file onto the hard disk.
2. Quit any applications that are running on the computer.
3. Connect the computer and the scanner to update via the USB cable or network.

### **USB**

Connect the scanner and the computer via the USB cable bundled with the scanner, and then confirm the scanner icon appears in [Devices and Printers] under Control Panel.

### **Network**

Connect the scanner and the computer via a network. Using fi-7300NX Scanner Selection Tool, confirm the scanner to be connected.

### Hint:

The firmware update searches for a scanner to update in the following order and update the firmware of the scanner found first.

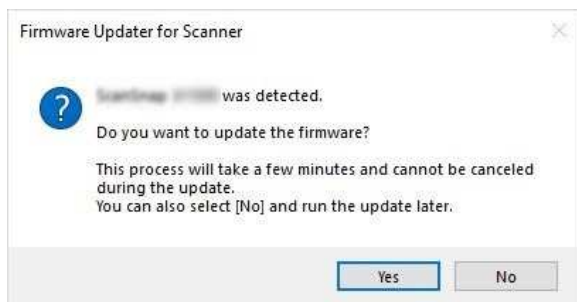
(Order of scanner searching has nothing to do with how to connect to the scanner.)

1. Scanner selected with fi-7300NX Scanner Selection Tool.
  2. Scanner connected with the USB cable.
4. Run the downloaded file to create a folder with the same name.

- Run FisRomWt.exe in the folder created in step 4.  
Click [Yes] to start firmware update.

**Note:**

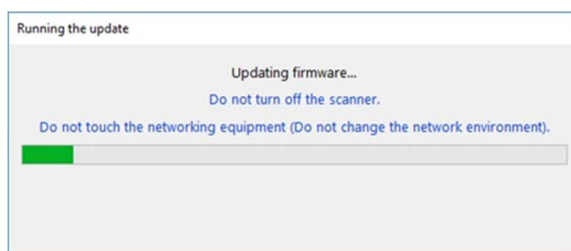
Before starting firmware update, be sure to close the setting screen on the touch screen when the scanner is connected via a network.



**USB**

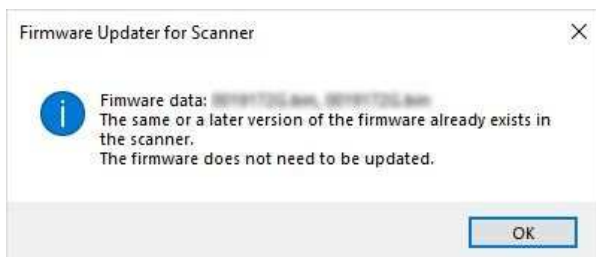


**Network**



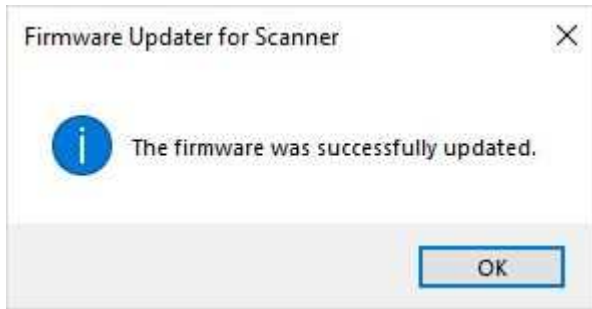
**Hint:**

When the firmware has already been updated, the following dialog appears.  
Press [OK] to close the dialog.



6. Once the update is done, the following dialog appears.

Press [OK] to close the dialog.



Hint:


### **USB**

When the Display language of the Touch Screen is set to a language other than English, it will take some time (approx. 10 mins) to save the language setting after the update has completed. Do not turn off the scanner until the process completes.

### **Network**

When the Display language of the Touch Screen is set to a language other than English, it will take some time (approx. 10 mins) to save the language setting before the update has completed.

7. Confirm the firmware version on the Touch Screen, following the instructions below.

Select  → Scanner Information → Standard Information

Confirm the version on [Product Revision] is the same as the version written at the download page.

**Note:**

In case of unsuccessful update, power off and on the scanner and then try again.