

## Installation Procedure for Firmware

Follow the instructions below to download and update firmware through the webpage. For details on how to distribute firmware through Scanner Central Admin (to the scanners operated by PaperStream NX Manager or PaperStream IP), refer to the User's Guide for the software.

1. Download the firmware update file onto the hard disk.
2. Quit any applications that are running on the computer.
3. Connect the computer and the scanner to update via the USB cable or network.

### **USB**

Connect the scanner and the computer via the USB cable bundled with the scanner, and then confirm the scanner icon appears in [Devices and Printers] under Control Panel.

### **Network**

Connect the scanner and the computer via a network. Using fi-7300NX Scanner Selection Tool, confirm the scanner to be connected.

### Note

The firmware update searches for a scanner to update in the following order and update the firmware of the scanner found first.

(Order of scanner searching has nothing to do with how to connect to the scanner.)


1. Scanner selected with fi-7300NX Scanner Selection Tool.
2. Scanner connected with the USB cable.

4. Run the downloaded file to create a folder with the same name.

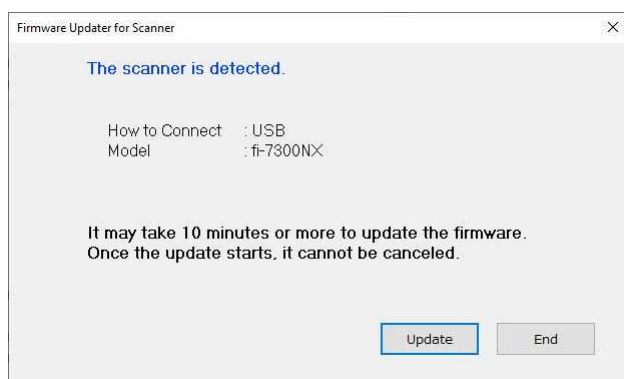
5. Run FisRomWt.exe in the folder created in step 4, and then the dialog below appears. Select [Yes] to start firmware update.

**Note:**

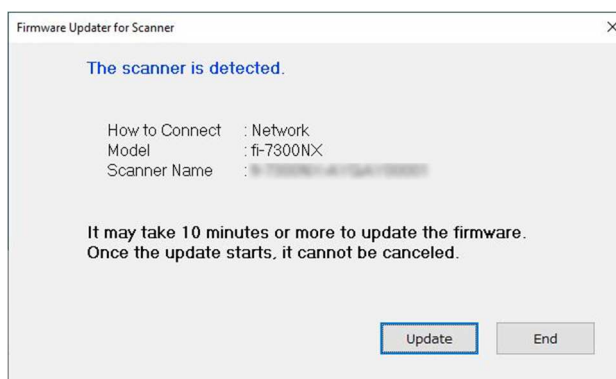
Before starting the firmware update, check the following.

- Make sure that the settings screen is not displayed on the touch panel of the scanner when the scanner and the computer are connected via a network.
- Make sure that  is not displayed on the touch panel of the scanner.

**USB**



**Network**



**USB**

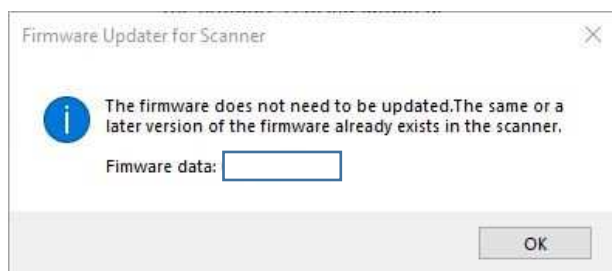


**Network**



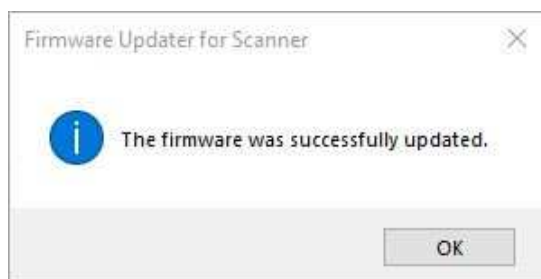
When the firmware has already been updated, the following dialog appears.

Press [OK] to close the dialog.



6. Once the update is done, the following dialog appears.

Press [OK] to close the dialog.



Hint:


### **USB**

When the Display language of the Touch Screen is set to a language other than English, it will take some time (approx. 10 mins) to save the language setting after the update has completed. Do not turn off the scanner until the process completes.

### **Network**

When the Display language of the Touch Screen is set to a language other than English, it will take some time (approx. 10 mins) to save the language setting before the update has completed.

7. Confirm the firmware version on the Touch Screen, following the instructions below.

Select  → Scanner Information → Standard Information, and confirm the version on [Product Revision] is the same as the version written at the download page.

**Note:**

In case of unsuccessful update, power off and on the scanner and then try again.