

PaperStream IP (ISIS) change history

Service Update 7

Version 1.56.1

Corrected issue:

1. Fixed the problem that scanning failed when using the scanner through PaperStream IP Net.

Version 1.50.0.6382

New features:

1. fi-7600, fi-7700, and fi-7700S are supported.
2. Added the [Target Document] option to [Front/Back Merging].
This option determines whether to merge front and back pages in accordance with the length of the document.
(fi-7160, fi-7260, fi-7180, fi-7280, fi-7460, and fi-7480 only)

Corrected issue:

1. Fixed other minor problems.

Version 1.42.0.5685

New feature:

1. fi-7030 is supported.

Corrected issues:

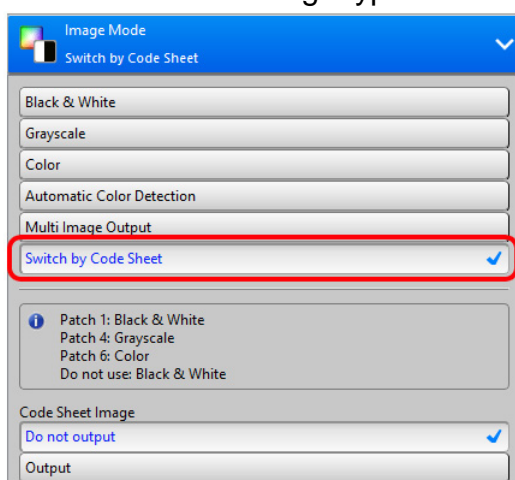
1. Fixed the problem where PaperStream IP may not function correctly if the user name that is being logged on to the computer includes characters other than alphanumeric characters.

2. Fixed other minor problems.

Version 1.42.0.5555

New features:

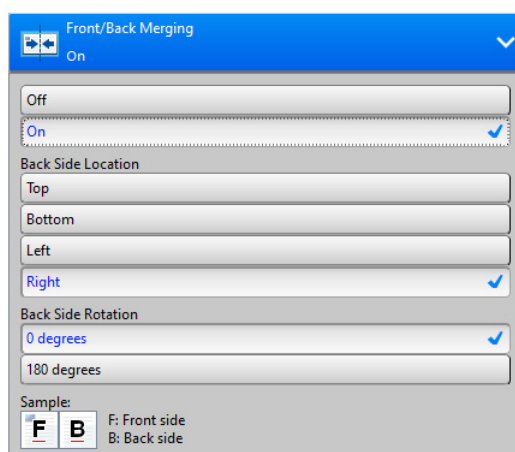
1. fi-7460 and fi-7480 are supported.
2. Added the [Switch by Code Sheet] function to Image Mode. This function allows to switch the image type for the output during scanning.



3. Added the [Front/Back Merging] function which combines front and back side of paper into one page (the [Front/Back Merging] function is not available in fi-6750S).

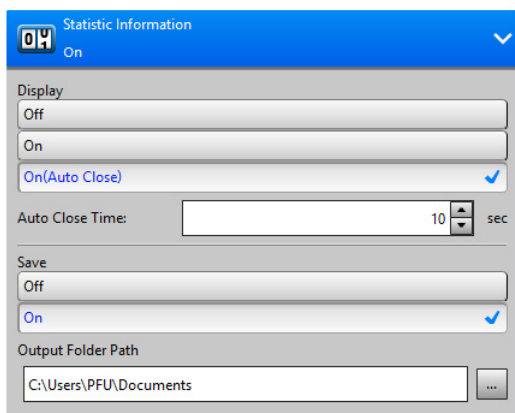
Attention:

PaperStream Capture v1.5 or later supports this function.

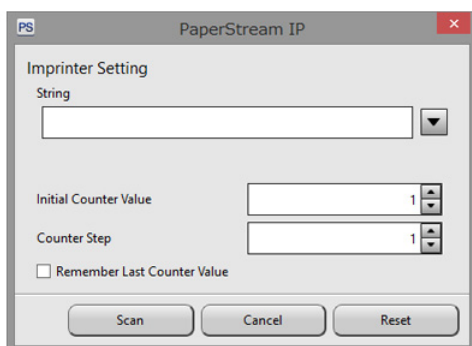
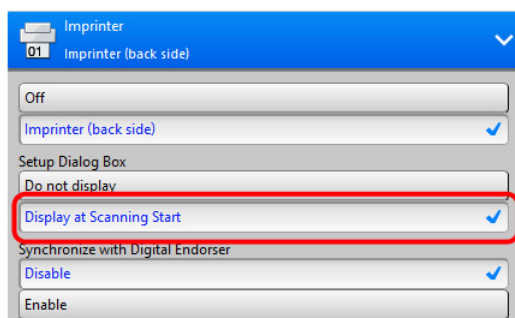


4. Added the [Statistic Information] function which allows to collect scanning information such as the scanner model used or the number of images

outputted by the scanner.



5. Added the [Display at Scanning Start] function to Imprinter. This function allows changing a character string and counter values temporarily before starts scanning.



6. Added the [Carrier Sheet] function (fi-7480 and fi-7460 only).

Improvement:

1. Cropping accuracy in long page scanning has been improved.

Corrected issues:

1. Fixed the problem where the driver GUI might be misplaced off the screen in Arabic environment.
2. Fixed the problem on the [Use separate settings for front and back side] function. Improved the part where the scan settings automatically applied to the front side even when selecting back side (except fi-6750S).

Service Update 6

Version 1.30.01510.30001

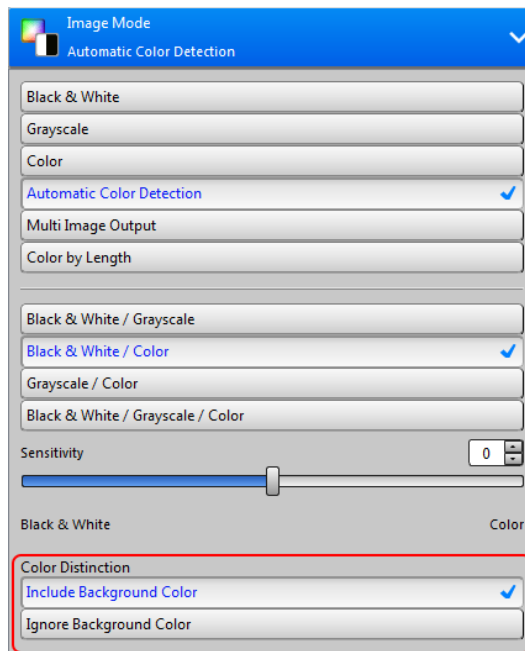
Corrected issue:

1. Fixed the defect that Software Operation Panel could not function properly or could stop responding when two or more scanners were connected to one computer simultaneously.

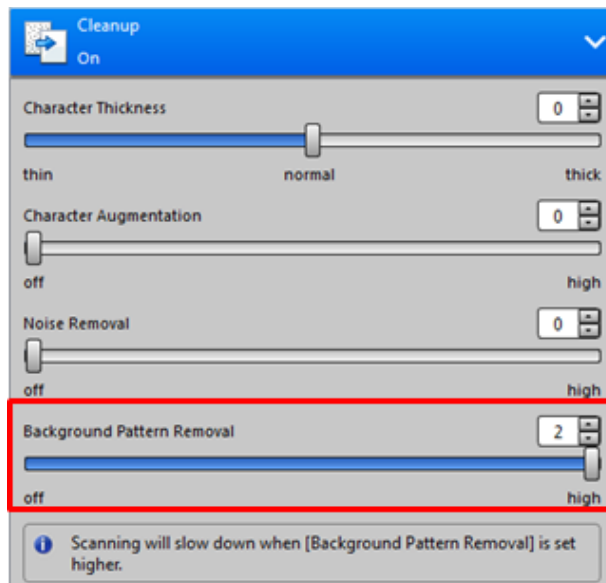
Version 1.30.01509.24001

Added features:

1. The [Color Distinction] category has been added to the [Automatic Color Detection] settings.
When [Ignore Background Color] is enabled, a document printed on a background color paper can be processed as a monochrome document.



2. The interface of [Background Pattern Removal] has been changed from switch buttons to the slider bar.



3. The [Mode] category has been added to the [Hole Punch Removal] settings.
When [Mode] is set to [Advanced], a large punched hole (up to 13 mm in diameter) or a non-circular punched hole (see a sample below) can be

removed ([Hole Punch Removal] is not available in fi-6110).



Improvements:

1. Accuracy of detecting barcodes in documents where two or more barcodes exist has been improved.
2. “Device Stage ” feature has been removed from the installer to reduce its size, and thereby the download time is shortened (Device Stage is not included in the installer for fi-5950, fi-6800, fi-6400, fi-6770, fi-6750S, fi-6670, or fi-5530C2).
3. [Accuracy] in the [Priority] settings of [Cropping] - [Automatic Size] settings has been enhanced, aiming for reducing possibility of cropping failure caused by vertical streaks on the image (The [Priority] settings are not available in fi-6750S or fi-6110).
4. Some descriptions in Arabic or in Russian have been revised.
5. The window to select a scanner has been added to the Software Operation Panel. The scanner to configure can be selected during startup of Software Operation Panel when two or more scanners are connected.

Service Update 5

Version 1.21.01504.02001

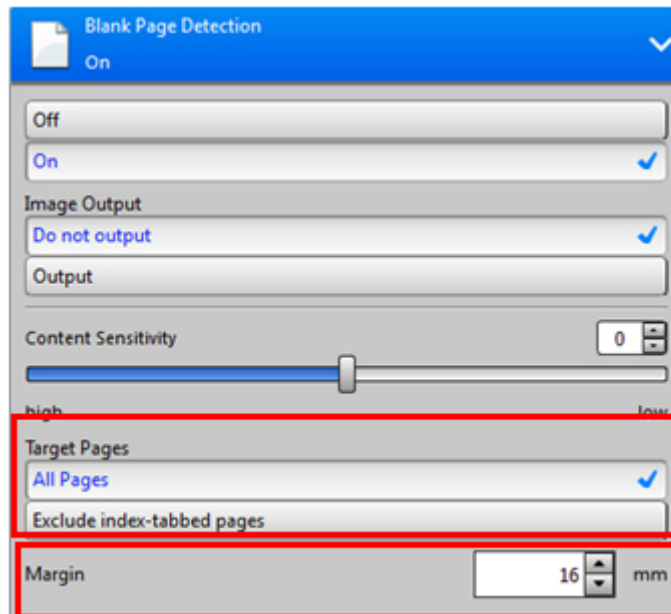
Added features:

1. Added [Target Pages] and [Margin] settings to [Blank Page Detection], whereby the target pages of the detection can be selected.

1.1. The [Target Pages] allows you to select whether index-tabbed pages will be included in the target of the detection.

Note: To use this feature, go to [Configuration] > [Image Processing] and set [Index Tab] to [Output].

1.2. The [Margin] allows you to set the (width of) margin area from the document edge which will not be screened for the blank page detection.

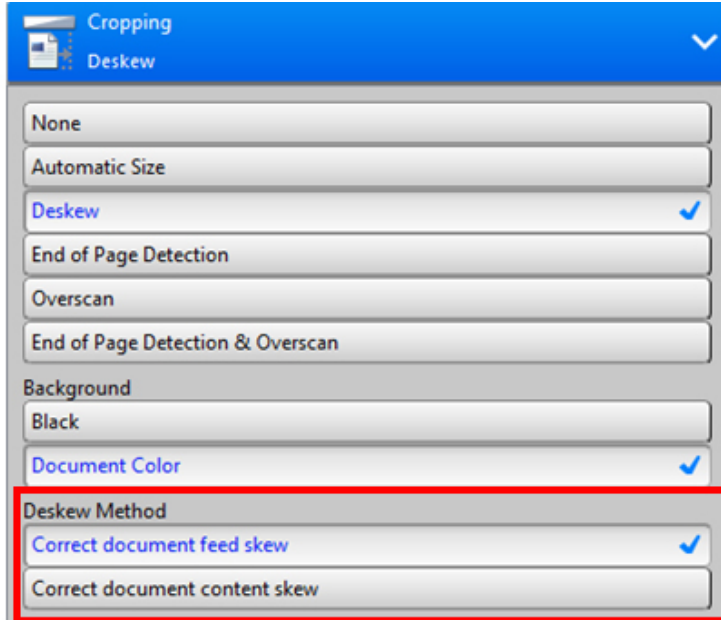


2. Added [Automatic] feeding feature to [Continuous Scan], whereby the scan starts automatically after loading documents on the ADF chute.



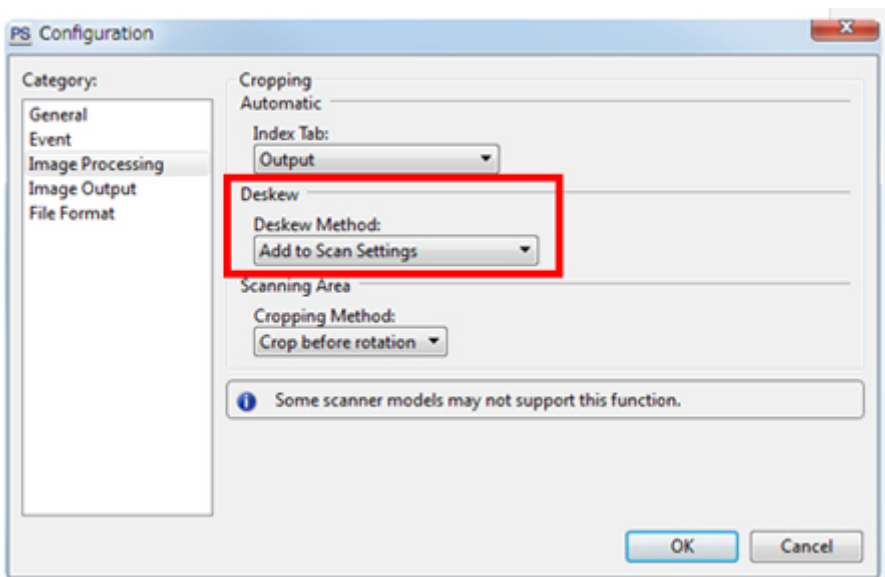
Improvements:

1. [Deskew Method] can be also set from [Normal dialog].

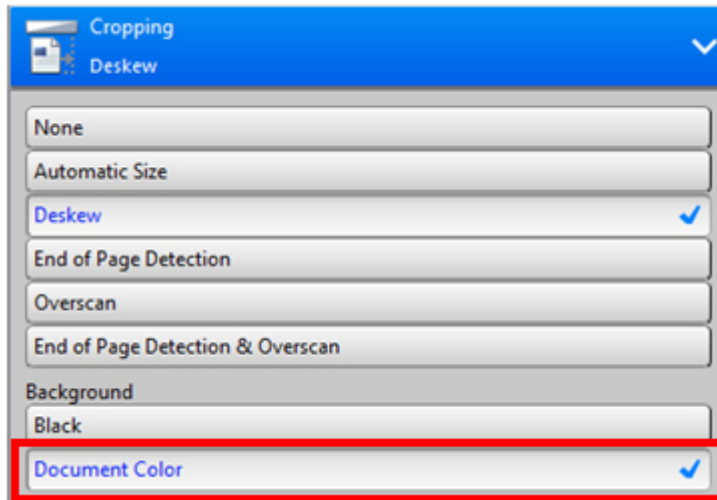


Configurations in the [Normal dialog] can be saved to a profile so that you can select a different [Deskew Method] for each document.

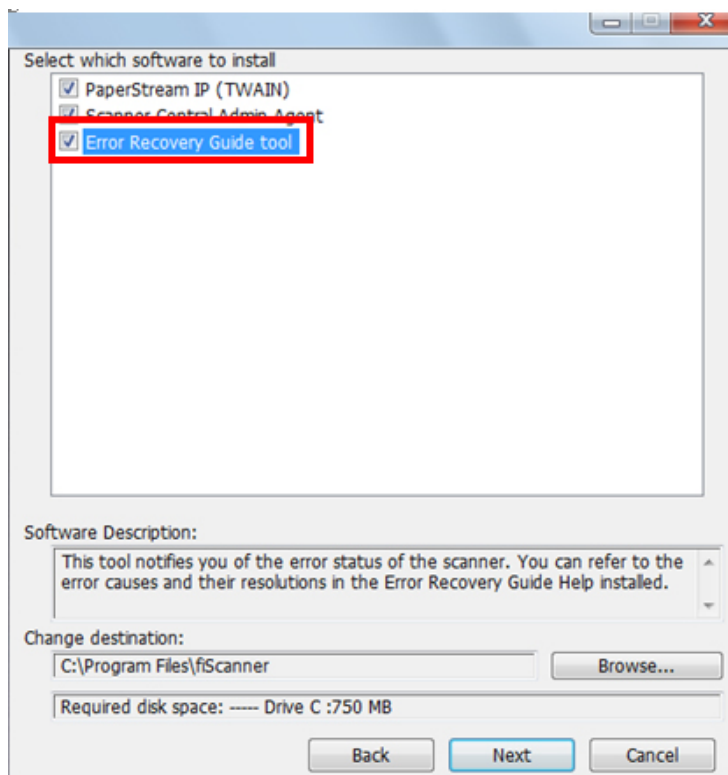
Note: To use this feature, go to [Configuration] > [Image Processing] and set [Deskew Method] to [Add to Scan Settings].



2. Renamed [Background Color] in [Background] of [Deskew] to [Document Color].



3. Whether the Error Recovery Guide runs automatically during Windows® startup or not can be selected during installation of PaperStream IP driver. To exclude Error Recovery Guide from the Windows® startup, clear the checkbox for [Error Recovery Guide tool].



4. Setup.exe runs automatically after running (extracting) the compressed execution file of the driver installer.

Corrected issues:

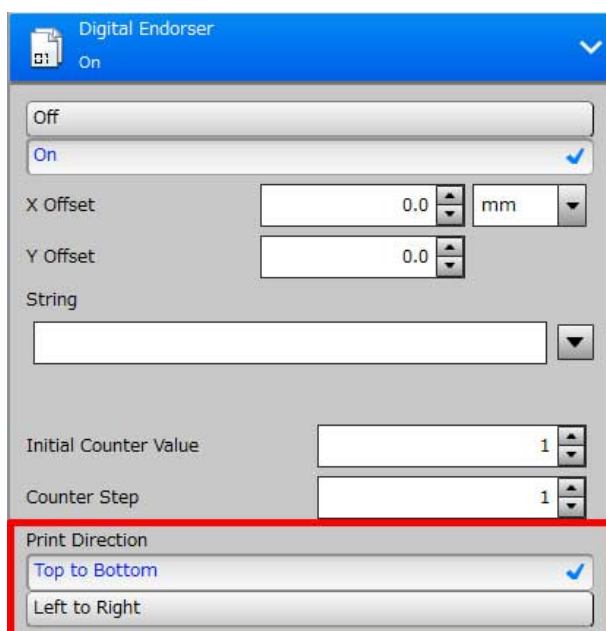
1. Fixed the following defect that a part of image is not outputted or unnecessary image is outputted in flatbed scanning:
 - The edge of image is cut by cropping.
 - The inside of the document is cut by cropping.
 - Cropping is out of place when running [Deskew].
2. Fixed the defect that an application may end abnormally when modules of PaperStream IP are loaded.
3. Fixed the defect that [Select Scanner] is not available in some applications.
4. Fixed the defect that [Hole Punch Removal] does not work properly with some type of documents (It doesn't occur in fi-6110).

Service Update 4

Version 1.10.01411.19001

Added features and improvements:

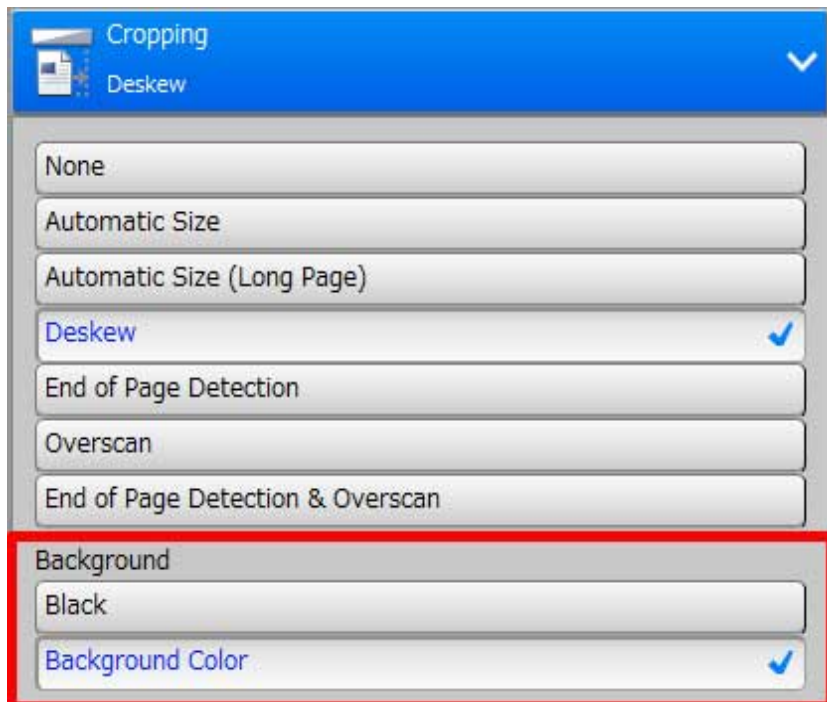
1. Added [Left to Right] for [Print Direction] in [Digital Endorser]. It enables to print a text from left to right.



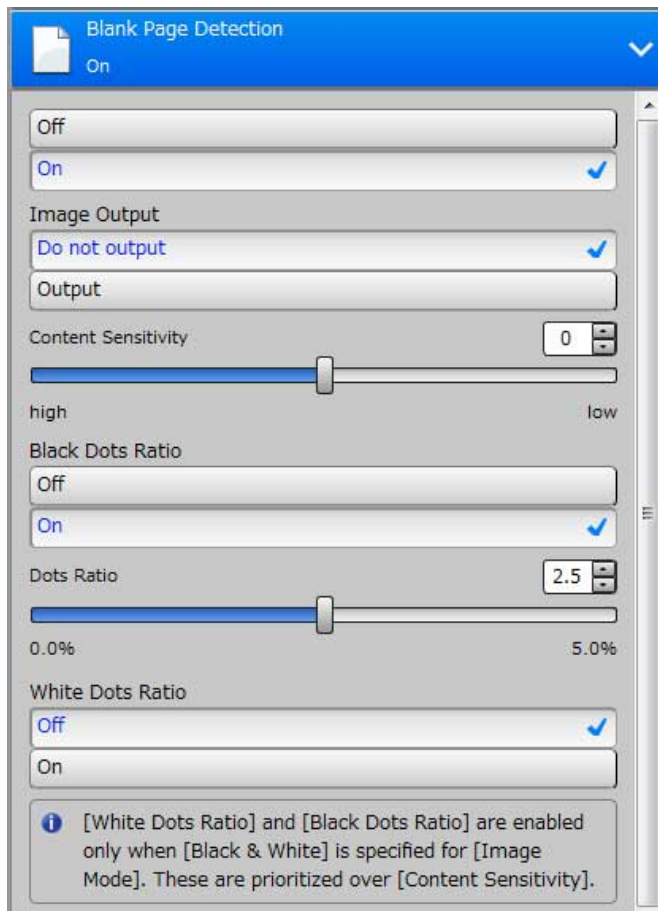
2. Added [Aztec Code] of two-dimensional codes for [Type] in [Barcode Detection].

Note: "2D Barcode for PaperStream 1.1.0" or later is required to use [Aztec Code].

3. Added [Background] in [Deskew] setting of [Cropping] feature. [Background Color] enables to specify the document color as background color.



4. Improved the followings in [Blank Page Detection] window: - Improved the captions of [Sensitivity].
- Changed [Black & White Dots Ratio] setting into [Black Dots Ratio] and [White Dots Ratio] separately.



5. Improved the Arabic description of [Cropping].
6. Improved the followings in [Assisted Scan] window:
 - Only selectable buttons are displayed in [Automatic Color Detection] switch button.
 - Changed [Save Profile] option to a button.
 - Improved button layout in an Arabic environment.

Corrected issues:

1. Fixed the defect that insufficient memory error may occur when specifying [Scanning Area] and scan long page.
2. Fixed the defect that an image rotated by 180 degree may be outputted when back-side scanning is configured.

3. Fixed the description of [Endorser] of [Normal dialog] in a Russian environment.
4. Fixed the defect that [TIFF conversion failed] error may occur when a large amount of documents are scanned with PaperStream Capture.
5. Fixed the defect that the PaperStream IP driver may stop responding during scanning when duplex scan is performed in the following scan settings:
 - Set to [Accuracy] for [Priority] of [Cropping]
 - Set [0] or higher for [Sensitivity] of [Blank Page Detection]
6. Fixed the defect that an incorrect value may be set to the Counter of the [Digital Endorser] when specifying it with [TAG_ENDORSER_INCSTART] in API.
7. Fixed the defect that a license error occurs in Kofax VRS Elite.

Service Update 3

Version 1.8.01408.26001

Corrected issue:

- An internal error may occur in the driver when [Rotation] is set to [Automatic] and when a document has a particular pattern.

Version 1.8.01406.26001

Added improvements:

Changes in Assisted Scan

- Added [Marquee Zoom] to.
- Added the feature to switch the rotation direction to.
- Added the feature to change the Auto color detection results to.
- Added the blank page notification feature to.
- Added [Rescan] to.
- Added the feature to change the window size of.

- Replaced the [Restore Original], [Undo], and [Redo] buttons with the respective icons in.
- Moved the [Save Profile] button into the [Option] button which is newly added.

Changes in other features

- Added [Black & White Dots Ratio] in the [Blank Page Detection] methods.
- Added a link to “Product Support website” in the Start Menu.
- The default parameters are revised as below (only when the user locale is set to English (United States), English (Canada), or French (Canada)):
 - Paper Source: [Feeder (Front Side)] to [Feeder (Both Sides)]
 - Blank Page Detection: [Off] to [On]
 - Image Output: Do not output
 - Edge Filler: [Off] to [On]
 - Fill Color: White
 - Filled Area: 0.1 inch
 - Paper Size: [Letter] to [Double Letter] (A3 unit), Letter (A4 unit)
 - Dropout Color: [Green] to [None]
 - Hole Punch Removal: [Off] to [On]
 - Fill Color: Background Color

Corrected issues:

- Fixed the defect that the driver window may appear in a place where the user cannot operate when it is reopened in multi-display environment. This occurs after the driver window is closed and then the number of displays is reduced or the arrangement of the displays is changed before the window is reopened.
- Fixed the defect that Automatic Image Quality Checker (AIQC) may not be notified correctly when scanning with both [Blank Page Detection] and [Multifeed Detection] enabled.
- Fixed the defect that the existing exported file is lost when using the Scanning Profile Exporter and cancelling the overwriting of the file.

- Fixed the defect that the application may stop responding when the user scans, selecting the profile where [Color by Length] is enabled, in a scanner which [Color by Length] is not supported.
- Fixed the defect that the error message that means the string is not found appears from the application when the [Stop] button is pressed during scanning.
- Fixed the defect that [Automatic Color Detection] does not work correctly when using a particular application.
- Fixed the defect that the images scanned up to the pause of scanning are discarded when the scanning is paused by the application.

Service Update 2

Version 1.7.01403.19001

Corrected issue:

1. Fixed the defect that the scanner is unable to scan using Windows® XP or Windows® XP Professional x64 Edition.

Version 1.7.01402.07001

Added improvements:

fi-6240Z / fi-6230Z / fi-6140Z / fi-6130Z are supported.

1. The following changes have been made in the user interface of the driver dialog:
 - Added Turkish to the display language in the user interface.
 - Revised the design of the icon for switching between normal/simple screen to be more user friendly.
 - Revised the expression of the message in the [Preview] window.
2. Improved the [Edge Correction] feature to create a more natural result of edge correction for color image.
3. Revised [Blank Page Skip] feature to [Blank Page Detection]:

- Enable to specify whether a blank page is outputted or not.
 - Added the feature to notify the result of [Blank Page Detection] in the application (supported by API) when specifying to output a blank page.
 - Enable to detect a page with a bleed-through as a blank page by judging the outputted image when performing duplex scan.
4. Revised the feature to specify [Scanning Area]:
- Enable to specify the [Scanning Area] even when selecting [Automatic Size] for [Cropping].
 - Added the feature to specify individual [Scanning Area] in the case when each scan setting for multiple images is configured separately; and when [Multi Image Output], [Automatic Color Detection], [Paper Length Detection], and [Use separate settings for front and back side] are ON.
 - Enable to specify the timing of cropping [Scanning Area] in [Configuration]: whether to crop image before or after rotation can be selected by configuring the setting of [Rotation].
5. Revised the feature of [Barcode Detection]:
- Enable to specify [The maximum number of barcodes to be detected per page] to up to 20.
 - Added [Data Matrix] format to Two-dimensional Codes.
- Note:
Two-dimensional Codes is available when 2D Barcode for PaperStream has been installed.

Corrected issues:

1. Fixed the defect that PaperStream IP may stop responding when using Web applications to scan.
2. Fixed the defect in the Software Operation Panel that [None] is set for [Dropout color] even if [White] is specified (It occurs only in fi-6770/fi-6750S/fi-6670).
3. The default of [Tone Adjustment] is revised to [Automatic] after the installation.
4. Fixed the defect that the scan settings may not be saved.
5. Fixed the defect that a sheet with patch codes printed is not excluded when [Job Control] is specified.

6. Fixed the defect that an abnormal image is outputted when [Color] or [Grayscale] is specified for [Image Mode].

Service Update 1

Version 1.4.01311.21001

Added improvements:

- Added the function to save the scan settings in the profile when using Assisted Scan. “Save Profile” button is added to the Assisted Scan window.
- Able to specify Scanning Area in long page scanning mode. (except fi-5950, fi-6770, fi-6750S and fi-6670)
- Able to specify Shadow and Highlight when specifying [Black & White] in Image Mode and selecting Custom in Tone Adjustment.

Corrected issues:

- The dialog of Assisted Scan may not display properly when specifying “Use separate settings for front and back side” in Option (except fi-6750S).
- The settings of Color Cleanup may not be configured from the dialog when outputting in [Color] or [Grayscale] image mode.
- Marking pages may not operate when using the driver in PaperStream Capture and selecting [Mark pages when multifeed is detected] checkbox.
- The settings of Dropout Color may not be applied when outputting in Black & White or Grayscale. (fi-6110 Only)
- In rare cases, launching Software Operation Panel or changing the settings on Software Operation Panel may cause the scanner device to hang up. (fi-5530C2 and fi-6110 Only)
- An error may occur after scanned 1000 pages or more in [Multi Image Output] when scanning continuously (without terminating the application).