

Scanner Central Admin Server change history

Content of change from 05.00.01 to 05.2.0

- New features:
 1. fi-800R is supported.
 2. Amazon Web Services (AWS) is now supported by Scanner Central Admin Server as long as the application is connected to fi-7300NX operated with PaperStream NX Manager. AWS is not supported when Scanner Central Admin Server is connected to a scanner model connected and operated with a computer.
- Improvements:
 1. Microsoft® SQL Server® 2014 Service Pack 3 is now installed together with Scanner Central Admin Server.
(previously installed Microsoft® SQL Server® 2014 Service Pack 2)
 2. Display width of each items on the list screens of Scanner Central Admin Console is now adjustable.

Content of change from 05.00.00 to 05.00.01

Service Update 1

- New features:
 1. Microsoft® Azure™ is supported.
Note:
Microsoft® Azure™ is only supported in limited usage where fi-7300NX is used through PaperStream NX Manager.
The platform is not supported by the scanner models that are operated from a computer.

Content of change from 04.08.08 to 05.00.00

- New features:
 1. The following model and software is now supported:
 - fi-7300NX
 - Network Setup Tool
 - PaperStream NX Manager
 2. SQL Server 2014 Service Pack 2 (Service Pack 2) is now installed together with Scanner Central Admin Server.

Content of change from 04.08.06 to 04.08.08

- Corrected issue:
 1. Fixed the problem that HTTPS connection might not work on the [Scanner settings] window or [Job Mode Settings] window for N7100.
(However, if there is no problem with the software you are using, you do not need to update it.)

Content of change from 04.06.25 to 04.08.06

- New feature:
 1. Some new functions that come with the N7100 System Software version ns001 01.08.01.0010 are now available in Edit Scanner Settings.
- Improvement:
 1. Usability of the installer has been improved.
- Corrected issue:
 1. Fixed the problem that an update of PaperStream IP that cannot be installed to certain scanner models can be notified as an update for the models.

Content of change from 04.06.20 to 04.06.25

- New feature:
 1. The following new functions of N7100 are supported:
 - The function with which scan results can be automatically separated by the patch code files or the number of pages.
 - The linkage with Internet FAX.
 - The linkage with a printer directly connected to the network.

Note: The system version of N7100 must be ns001 01.06.01.0009 or later to use these functions.
- Improvement:
 1. Progress bar is displayed on the following windows while uploading an image scanner update module:
 - The [Image Scanner Update Registration] window for an image scanner
 - The [System Updates] window for a network scanner
 - The [Add-in Upload] window for a network scanner

- Corrected issues:
 1. Fixed the issue that an added shared printer from the Scanner Settings window for N7100 may not be removed.
 2. Fixed some other issues.

Content of change from 04.06.16 to 04.06.20

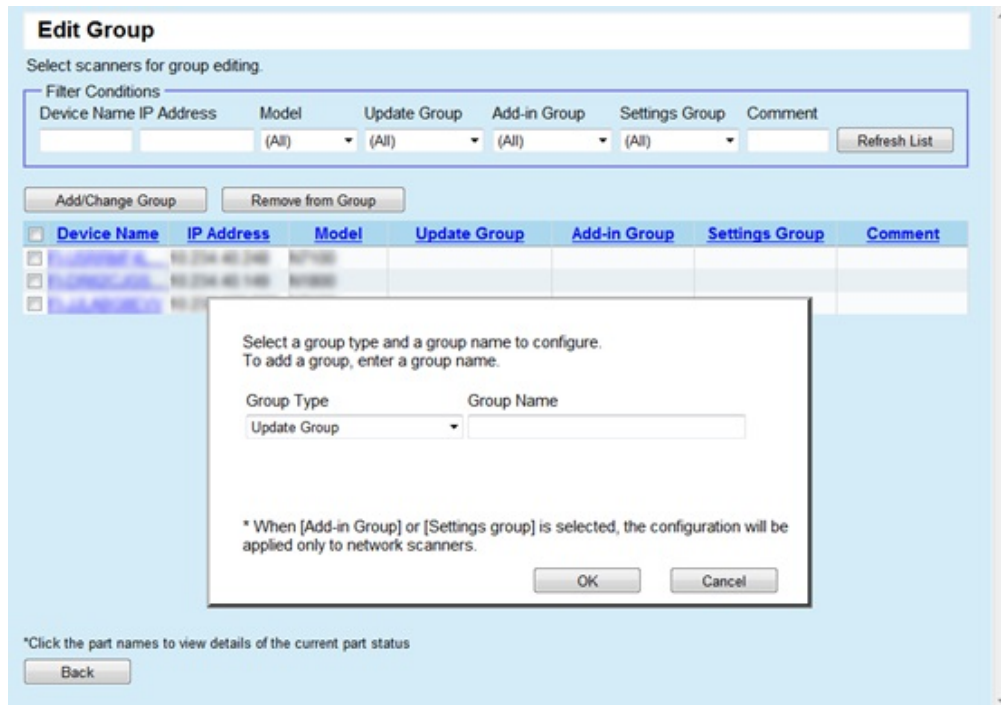
- New features:
 1. Added the setting to turn off only the display of N7100 during standby mode in the Edit Scanner Details window for N7100.
 2. Added “Automatic” to Resolution settings of the Scan Settings for N7100.
- Corrected issues:
 1. Fixed the defect that the content of help displaying when a session timeout occurs in Edit Scanner Details window for N7100 may not match with the actual content.
 2. Fixed the defect that some items in Job Mode Edit window for Network Scanners may not appear properly.
 3. Fixed the following defects that occur in Job Mode Edit window for Network Scanners:
 - a. A help window may not appear in some cases.
 - b. The pointer becomes waiting status though it is not waiting.
 - c. Scanner Central Admin may stop responding while displaying a dialog of “Connecting to the LDAP server ...” in Job group member settings.
 - d. Compression ratio of JPEG or TIFF returns to the default every time it is shown.
 - e. A message of session timeout does not appear even when it occurs.

Content of change from 04.05.08 to 04.06.16

New Features and Improvements:

1. N7100 has been supported and the following features are available for N7100.
 - Detect completion of scanning and automatically clears an error.
 - Inform consumables replacement to the administrator.
 - Inform to the administrator that the scanner is required for checking, such as status requiring cleaning.

2. Edit Group feature has been added. It edits the setting of two or more scanners in a single operation.



3. The Wake-On-LAN port number has been described in the Scanner Central Admin User's Guide.
4. SNMPTrap messages sent by Scanner Central Admin Agent have been listed in the Scanner Central Admin User's Guide.

Content of change from 04.04.10 to 04.05.08

New Features and Improvements:

- Added the feature and an icon to notify available updates to administrators.
- Added the feature to show the update history.
- Revised the operation of configuring SharePoint in Scanner Settings for network scanner of Scanner Central Admin Server.

Corrected issues:

- Fixed the defect that the incorrect error code dialog may appear during the installation of Scanner Central Admin Server.

Content of change from 04.03.17 to 04.04.10

New Features and Improvements:

- Adding items in Scanner Details
- Customize items to display in Scanner Config List and display order

- Define the update distribution time period for every image scanner. This feature enables the limitation of update distribution during business hours.
- Arabic mode user interface
- The system requirements of .NET Framework is revised to .NET Framework 4.0 system.
- Display the “check required” icon in the Scanner Operation Monitor window and the Scanner Details window when an unsupported driver is installed.

Corrected issues:

- A defect found when sorting by scan count in the statistical information window is corrected.

Content of change from 04.03.10 to 04.03.17

New Features and Improvements:

- fi-7280 / fi-7180 / fi-7260 / fi-7160 are supported.
- PaperStream IP is supported.
- Windows Server® 2012 R2 is supported.
- Internet Explorer 11 is supported.

Content of change from 04.02.10 to 04.03.10

New Features and Improvements:

- Function to notify scanner maintenance information is added.
- Function to manage scanner status is enhanced.

Important:

Due to the new function, the supported driver version has been updated. Please refer to the [Readme](#) for details about the supported driver version.

Content of change from 04.02.07 to 04.02.10

New Features and Improvements:

- Windows Server® 2012 is supported.

Content of change from 04.01.16 to 04.02.07

New Features and Improvements:

- The Statistical Information function is newly added.
The information about the number of scanned sheets for the specified period can be checked.

Corrected issues:

- The event log on the event list cannot be exported appropriately.
- The Job Mode setting screen cannot be operated with the unsupported language OS.

Content of change from 04.01.15 to 04.01.16

New Features and Improvements:

- Automatically detect and register network scanners from the specified network area.
ScanSnap N1800 (System revision: ss001 01.02.01.0010 or later) is newly supported.

Content of change from 04.00.55 to 04.01.15

New Features and Improvements:

- Add-in setting information can be distributed and applied to the network scanners.
- Automatically detect and register network scanners from the specified network area.
Target network scanner: fi-6010N (System revision: is001 02.03.01.0009)